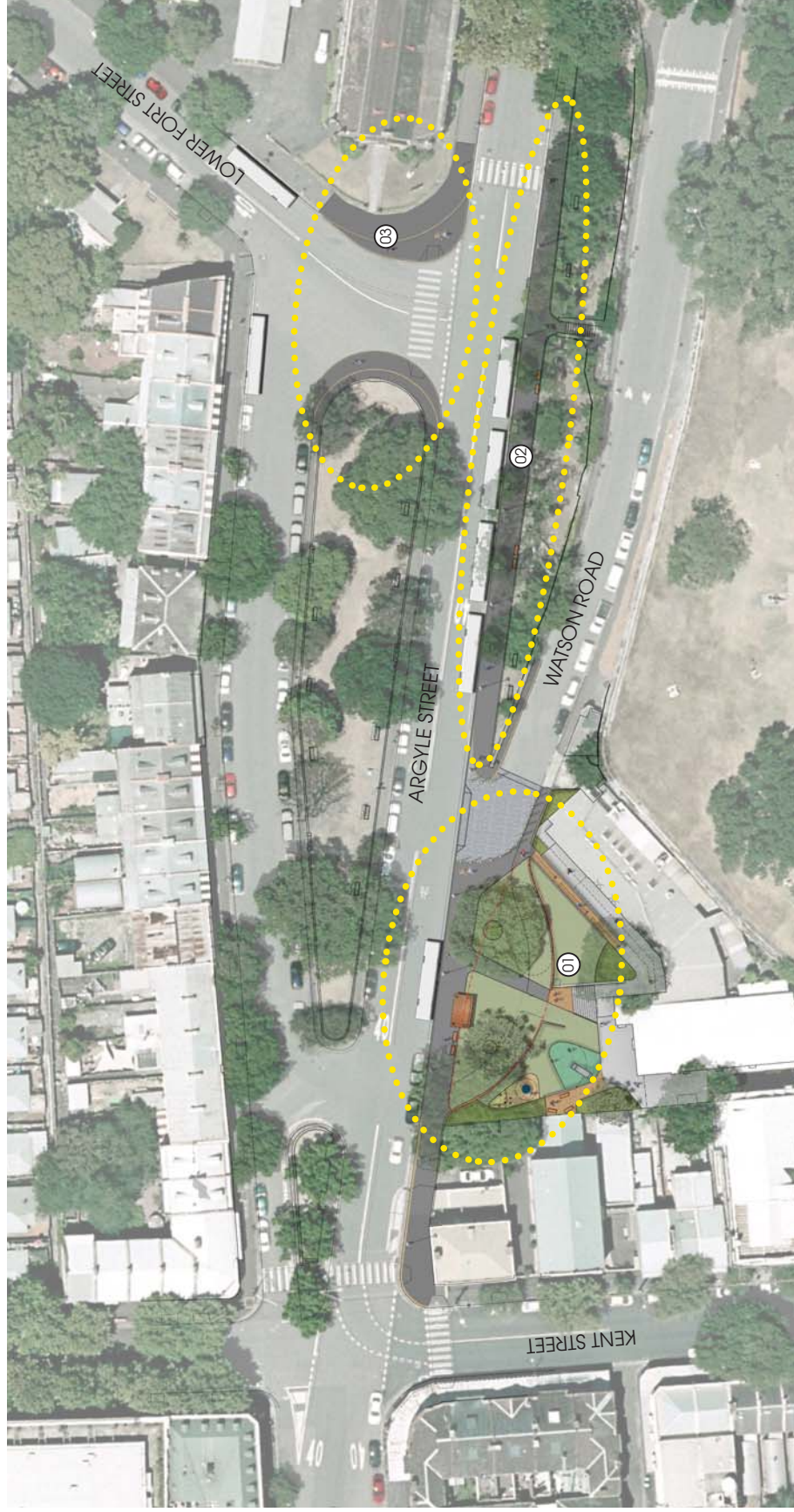


ATTACHMENT A

ATTACHMENT A

**ARGYLE STREET REFINED
CONCEPT DESIGN**

ATTACHMENT A



Key Features

- 01.
 - Reclaim Bus Turning Area
 - Creation of a New Pocket Park
 - Footpath Continuation Across Watson Rd
 - Upgrade to Community Centre Forecourt and Play Space
- 02.
 - Regraded Footpath
 - New Street Trees
 - New Seating on Footpath
 - Removal of Brick Picnic Shelter
- 03.
 - Extended Footpath Areas
 - New Pedestrian Crossing

ATTACHMENT A



Key Features

- 01. Pocket Park
- 02. Relocated Bus Shelter
- 03. Bus Stop
- 04. Community Centre Parking
- 05. Loading and Deliveries
- 06. Seating
- 07. Fig Tree Planting
- 08. Play Space
- 09. Footpath Continuation
- 10. Ramped Entry
- 11. Stairs to Community Centre
- 12. Removal of Bin Store
- 13. New Fence
- 14. New Bin store location

Scale 1:250 at A3

ATTACHMENT A



Staging

- 01.
 - Footpath improvements to Argyle Street
 - Works within the grounds of the Community buildings
- 02.
 - Raised threshold at Watson Road
 - Works within the former tram turning circle
 - Pedestrian crossing and associated works at Lower Fort Street